

# APROLI 380<sub>LB</sub>

- Oil-hydraulic Operator
- Installation on Single or Double Bi-parting Doors
- Versatile to meet various application requirements



Aproli 380 LB Right-hand

GB



**FADINI**<sup>®</sup>  
the gate opener

# APROLI 380<sub>LB</sub>

## Oil-hydraulic Automation for Double Bi-parting Folding Doors

**APROLI 380 LB** is an oil-hydraulic automation to operate single or double bi-parting folding doors. It is mainly designed for large, industrial doors, but it can be used for other applications requiring a similar operating principle.

Being an oil-hydraulic operator, Aproli 380 LB has all the advantages that this kind of product normally ensures such as reliability, full control of the movements and anti-crush prevention; a double locking valve device can hold the doors locked in any required position on both opening or closing cycles.

This on-the-door system is fitted to new or existing doors, versatile to meet the most various applications, it is equipped with an adjustable arm to be fixed either to the wall or directly to the door. The arm is made up of two parts: a sliding plate and a square tubular section, both made of galvanized steel.

The structure consists of two main assemblies; one includes the electric motor, the hydraulic pump and the valve group enclosed in a square section container, made of anodized aluminium, in an oil reservoir. The other assembly is the jack, in axis with the motor pump block and fitted with the rotation shaft, to which the telescopic arm is connected for the transmission of the movement.

The operator is a handed unit; it is Right- or Left-handed depending on which side of the door it is mounted.

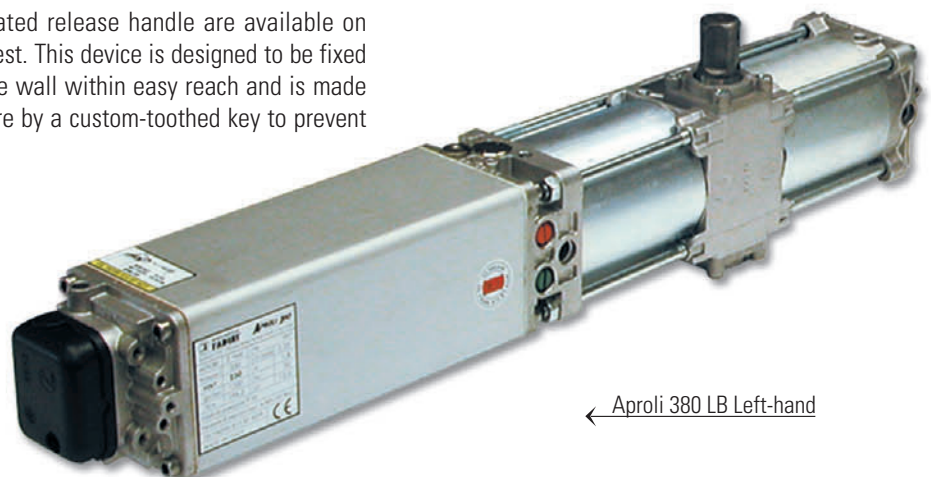
In case of an emergency or power failure an override lever is fitted to the lower side of Aproli 380 LB for the manual operations of the door.

The pushing power of the operator is controlled by valves and is made adjustable in the open and close cycles by

means of screws, different in colour for identification reasons and suitably positioned in the front side of the operator to facilitate setting.

An anodized aluminium cover and a cable-operated release handle are available on request. This device is designed to be fixed to the wall within easy reach and is made secure by a custom-toothed key to prevent

misuse. The metallic cable is to be fixed to the operator release lever. The fixing method depends, though, on the application requirements, and the installation agent is to find the best solution.

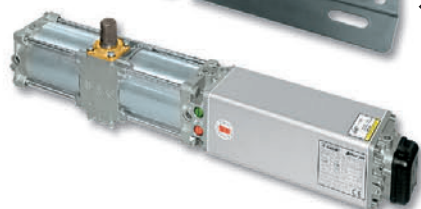
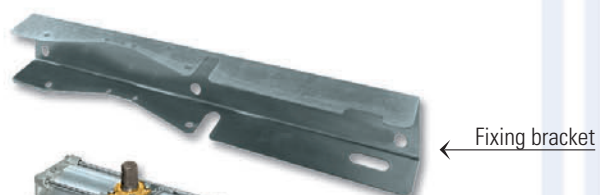


← Aproli 380 LB Left-hand

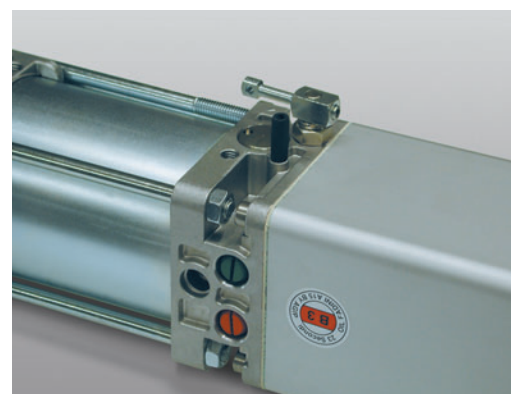
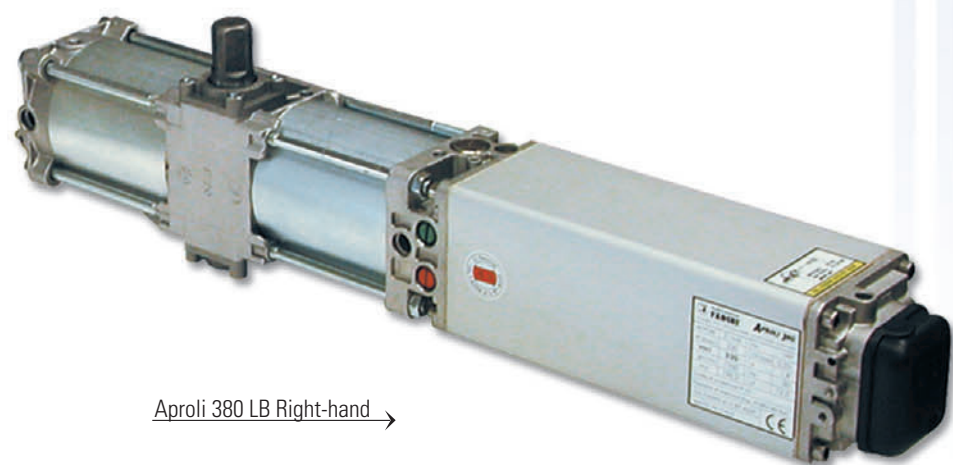
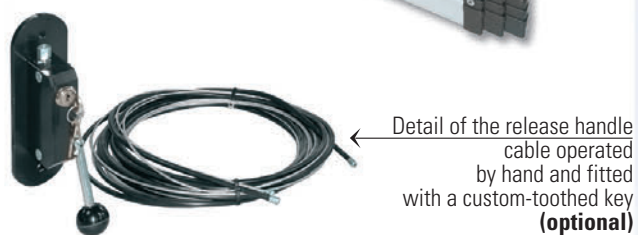
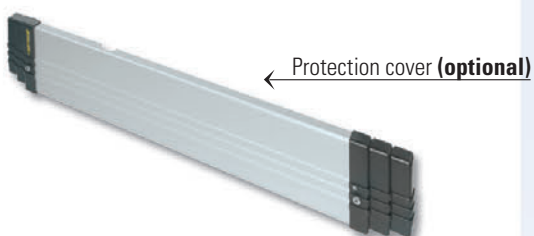
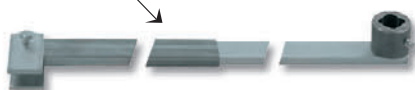


- Ⓐ APROLI 380 LB fitted to a door section  
Max. recommended width 1.5 m each section
- Ⓑ Detail of the maximum/minimum pressure valves and manual release valve
- Ⓒ (C) Detail of the hardened steel rotation shaft

**Component parts for the installation of APROLI 380 LB**



Telescopic fixing arm



# APROLI 380 LB

# GATE OPENER

## Technical specifications

### ELECTRIC MOTOR

Power Output.....	0.18 KW (0.25 HP)
Supply Voltage.....	230 V
Frequency.....	50 Hz
Absorbed Current.....	1.2 A
Absorbed Power.....	250 W
Capacitor.....	12.5 µF
Motor Revolution.....	1'350 rev./1'
Intermittent Service.....	S 3

### HYDRAULIC MOTOR PUMP UNIT

Pump flow rate P3.....	0.85 l/min.
Average working pressure.....	1 MPa (10 bars)
Maximum pressure.....	3 MPa (30 bars)
Opening time.....	23 s
Max. rated torque.....	196.2 Nm
Rotation.....	205° max.
Hydraulic oil type.....	OIL FADINI A 15 by AGIP
Static weight.....	10.5 Kg
Weight Aproli 380LB and fittings.....	16 Kg
Working temperature.....	-20°C +80°C
Protection Standards.....	IP 55

### PERFORMANCE

Duty cycle:.....	23s Opening - 30s Dwell - 23s Closing
Time of one complete cycle:.....	76 s
Complete Cycles Opening-Dwell-Closing:.....	47/Hour
137'000 approx. cycles per year-8 hours'service per day	

## Accessories



**ELPRO 13 CEI**  
Control box



Flashing lamp - **MIRI 4**  
fitted with the aerial Birio A8



**JUBI SMALL 433**  
Transmitter



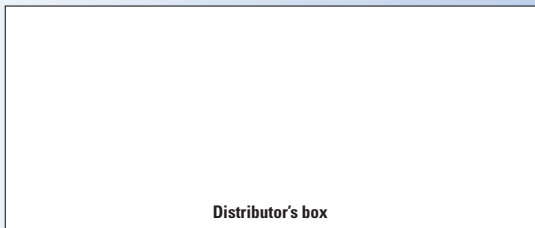
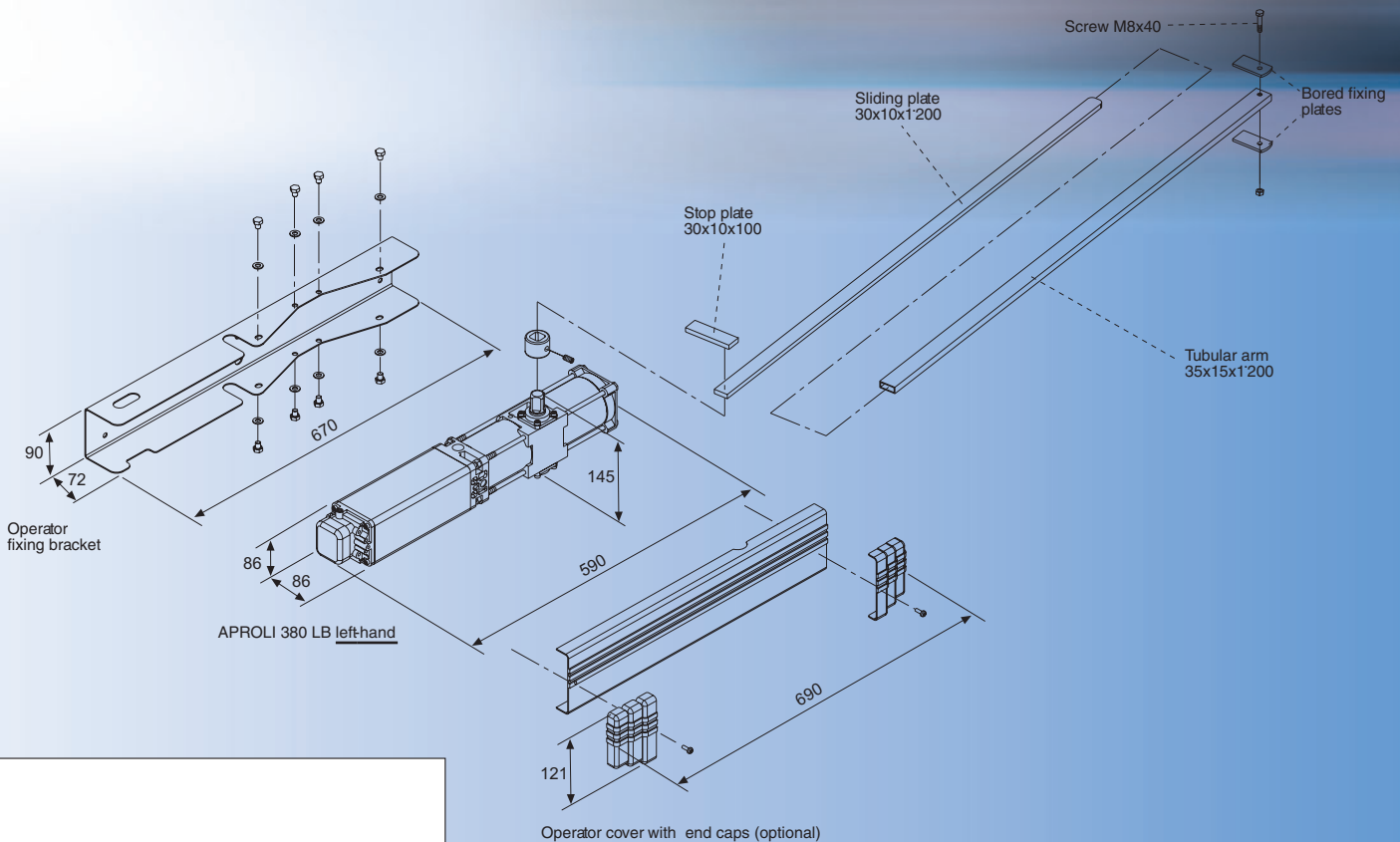
**PULIN 3**  
Push buttons



**TRIFO 11**  
Photocells



**JUBI 433/1R**  
External radio receiver



Distributor's box

The manufacturers reserve the right to change the products without any previous notice



**EUROPEAN MARK CERTIFYING CONFORMITY TO THE ESSENTIAL REQUIREMENTS OF THE STANDARDS 98/37/EC**

- DECLARATION OF CONFORMITY
- GENERAL WARNINGS
- EN 12453, EN 12445 STANDARDS
- CEI EN 60204-1 STANDARDS
- WARRANTY CERTIFICATE ON THE CUSTOMER'S REQUEST

The "CE" mark certifies that the operator conforms to the essential requirements of the European Directive art. 10 EEC 73/23, in relation to the manufacturer's declaration for the supplied items, in compliance with the body of the regulations ISO 9000=UNI EN 29000. Automation in conformity to EN 12453, EN 12445 safety standards.

The growth of MECCANICA FADINI has always been based on the development of guaranteed products thanks to our "TOTAL QUALITY CONTROL" system which ensures constant quality standards, updated knowledge of the European Standards and compliance with their requirements, in view of an ever increasing process of improvement.



AUTOMATIC GATE MANUFACTURERS

Via Mantova, 177/A - 37053 Cerea (Verona) Italy - Tel. +39 0442 330422 r.a. - Fax +39 0442 331054 - e-mail: info@fadini.net - www.fadini.net